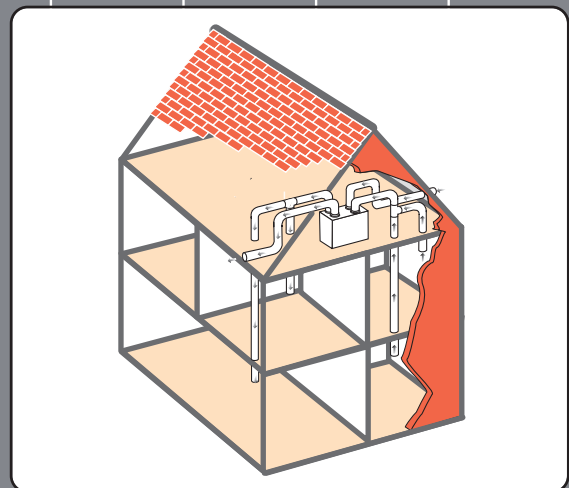


# mrXbox90

**Applications: Ideal for Homes and Apartments**  
**Locations: Loft or Cupboard**

- **Compliance** – SAP Appendix Q Compliant.
- **High efficiency** – 90% efficient.
- **Energy efficient DC motors** – uses 50% less energy than traditional fans.
- **Supply and extract filters** – ensures healthier environment, removing up to 95% of the dust from the atmosphere.
- **Multi option controls and sensors** – wide choice of controls including 3 speed trickle/boost and purge and optional wireless remote control.
- **Low noise levels** – Pressure fluctuations limit sound production keeping noise levels to an absolute minimum.
- **Summer bypass as standard** – Models L and M have summer bypass as standard.
- **Advice and installation service** – Please contact the applications team on 02920 858 200 (or email [drawings@nuaire.co.uk](mailto:drawings@nuaire.co.uk)) for advice on ventilation solutions and installation service.
- **Guaranteed constant airflow** – 2 self adjusting fans provide constant fresh air.
- **Low and easy maintenance** – Unit is fitted with filter indication display.
- **Simple to install** – Units have a display for setting and reading out.
- **5 year warranty** – For peace of mind.



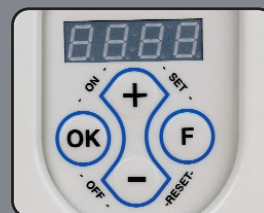
Typical installation with unit mounted in loft



Removable filters



Receiver and wireless remote control (optional)



Control panel

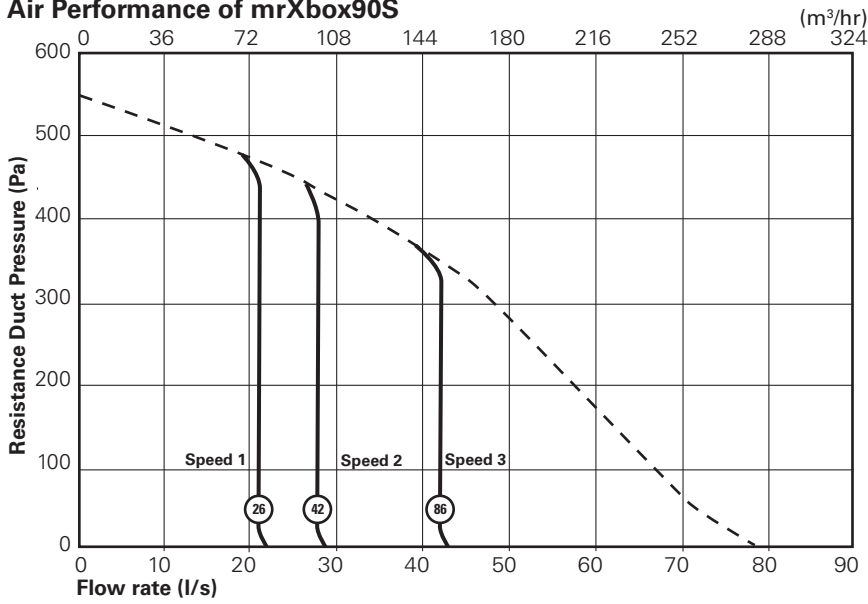


Speed selector switch (included)



# Performance

## Air Performance of mrXbox90S



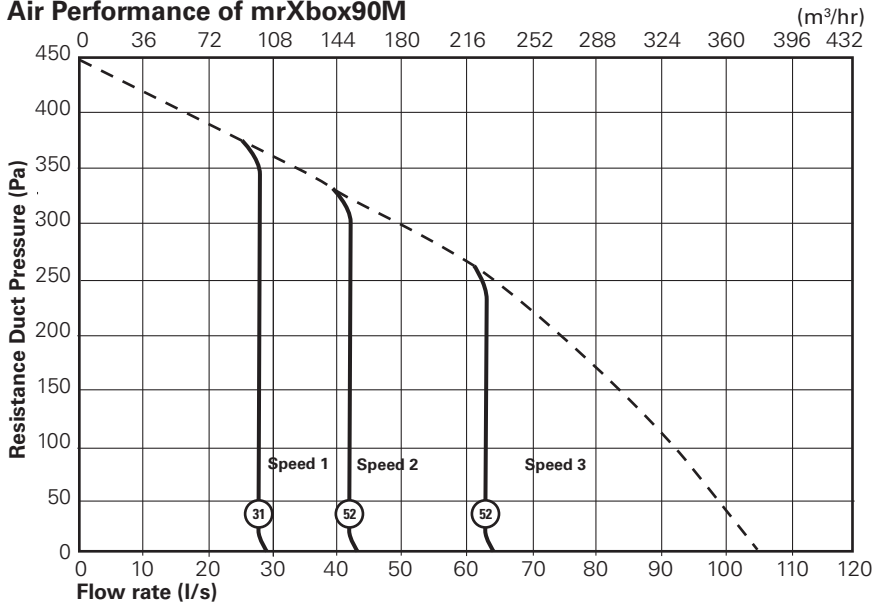
# Code Description

## mr - Xbox - 90 - I

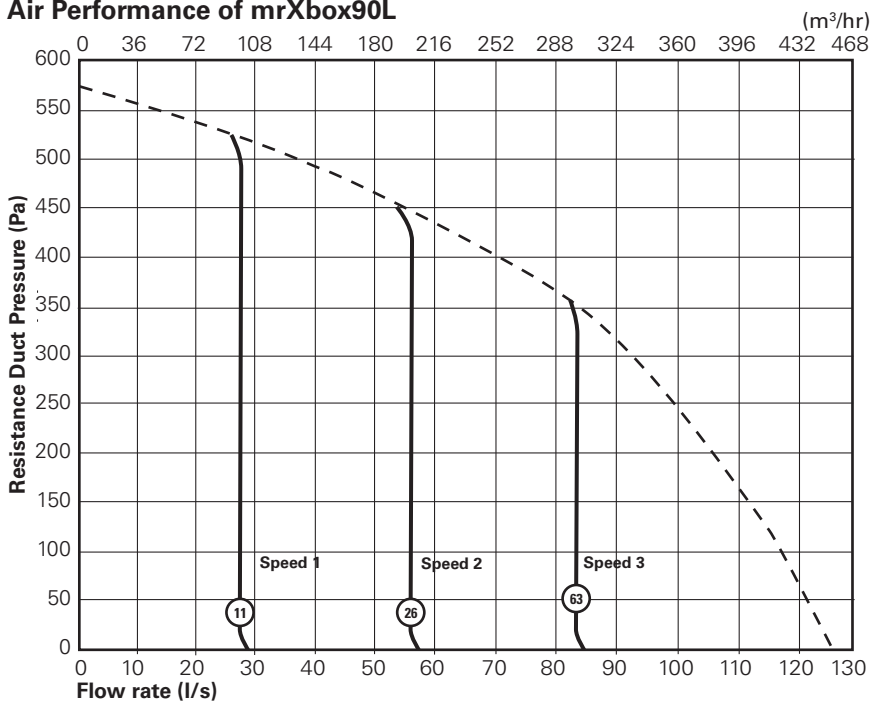
- 1 2 3 4**
- 1 = Multi-room extract/heat recovery**
  - 2 = Range**
  - 3 = Efficiency**
  - 4 = Size: S: small, M: medium and L: large**

Note: Speeds 1, 2 and 3 are factory default settings but can be adjusted to suit individual requirements.

## Air Performance of mrXbox90M



## Air Performance of mrXbox90L



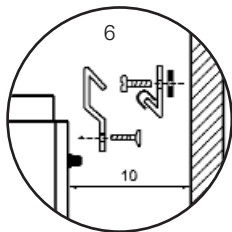
**Electrical & Sound - mrXbox90**

Speed	Code	Phase	Total motor power watts	Full load current amps		Induct Sound Power Levels dB re 1pW								Breakout dBA @3m	Weight kg
						63	125	250	500	1K	2K	4K	8K		
1	mrXbox90S	1	26	0.18	Breakout	42	37	31	27	22	14	7	7	29	28
					Supply	41	41	40	42	42	33	23	17		
					Extract	41	34	31	29	20	13	7	8		
2	mrXbox90S	1	42	0.28	Breakout	43	43	38	32	28	21	16	10	35	
					Supply	47	48	47	50	50	41	33	26		
					Extract	44	39	35	34	26	19	12	9		
3	mrXbox90S	1	86	0.57	Breakout	51	57	43	43	39	34	30	25	45	
					Supply	55	61	57	60	60	53	46	41		
					Extract	52	49	45	44	36	30	24	11		
1	mrXbox90M	1	31	0.22	Breakout	41	30	26	24	17	10	3	10	25	35
					Supply	44	39	39	39	39	29	21	15		
					Extract	39	30	20	21	13	4	6	13		
2	mrXbox90M	1	52	0.36	Breakout	46	38	35	32	27	21	13	13	33	
					Supply	48	48	46	49	49	40	35	27		
					Extract	44	44	37	36	31	22	19	15		
3	mrXbox90M	1	112	0.74	Breakout	50	43	43	38	34	29	23	22	40	
					Supply	55	57	56	60	58	52	47	41		
					Extract	49	47	39	38	33	25	21	15		
1	mrXbox90L	1	23	0.17	Breakout	45	38	36	32	26	18	7	9	33	40
					Supply	50	51	48	48	49	40	34	23		
					Extract	36	33	21	23	15	7	8	15		
2	mrXbox90L	1	67	0.45	Breakout	50	47	43	38	37	31	25	22	42	
					Supply	59	63	59	58	57	52	48	41		
					Extract	46	47	35	33	30	22	16	16		
3	mrXbox90L	1	175	1.16	Breakout	60	57	53	47	44	43	37	37	51	
					Supply	65	68	68	66	64	61	57	52		
					Extract	52	57	46	42	38	34	29	20		

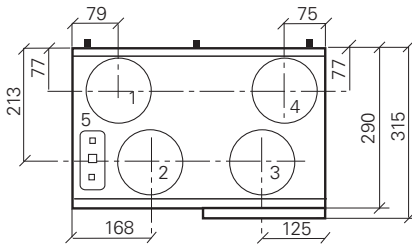
**Dimensions**

**Dimensional references:**

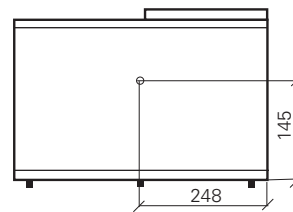
- 1 = spigot to dwelling. Supply (warmed fresh air)
- 2 = spigot to outside. Exhaust (cool stale air)
- 3 = spigot from dwelling. Extract (warm stale air)
- 4 = spigot from outside. Intake (cool fresh air)
- 5 = electric connections
- 6 = detail wall mounting (make sure to correctly place the rubber strip, washers and caps)



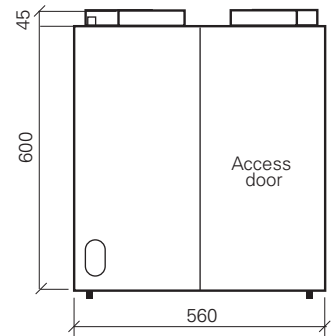
**mrXbox90S**  
4 x 125dia spigots View from top



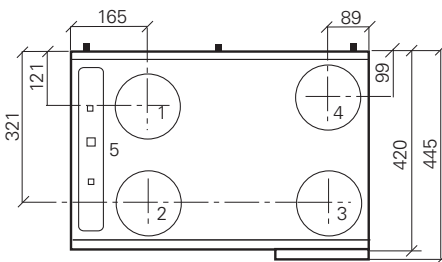
**Bottom view**



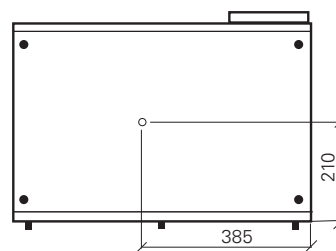
**View from front**



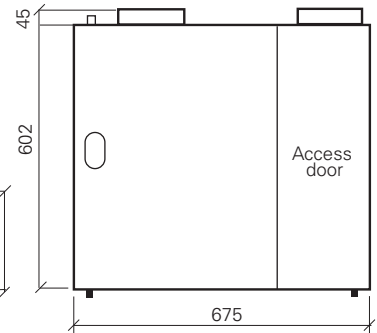
**mrXbox90M**  
4 x 160dia spigots View from top



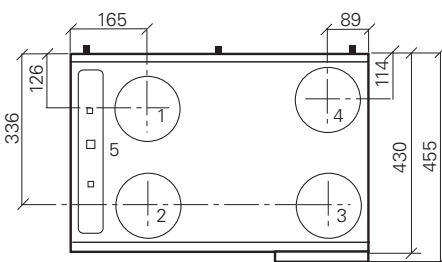
**Bottom view**



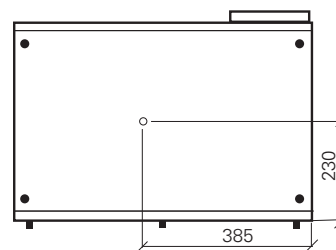
**View from front**



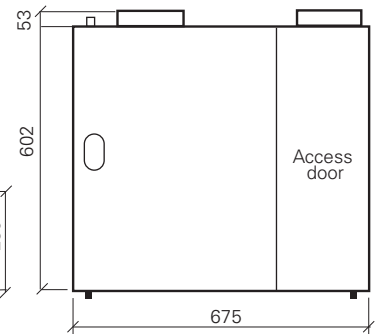
**mrXbox90L**  
4 x 180dia spigots View from top



**Bottom view**



**View from front**



# Ancillaries

## Wireless switch

Code  
mrXbox90BS



## Speed selector switch

Code  
mrXbox90SS  
(One switch included with every unit).



## F6 filter

Code  
mrXbox90F6



## Additional boost switch

Code  
mrXbox90ABS



An upgraded control option is available for the mrXbox90L and M units (factory fitted only), that provides the following functionality: Variable duty in response to Carbon Dioxide or Humidity sensor (demand control ventilation) and Control for pre or post heater (up to 1kw). These sensors/heaters are also available from Nuairé as ancillary items: Bypass override & Interface to fire or smoke alarm. This option is not applicable to the mrXbox90S. Please contact Nuairé for further details.

**For further ancillaries please refer to pages 22 - 25**

## Consultants Specification mrXbox90

### Operation

The supply and extract ventilation unit shall be positioned as indicated on the drawings and shall be in accordance with the particular fan schedule in the specification.

The combined supply and extract with heat recovery unit, shall supply filtered fresh air to each of the habitable rooms and vitiated air shall be extracted from the wet areas e.g. bathroom, en-suite, w.c, kitchen, utility rooms, etc. The supply air shall be pre-heated by the warm extract air via the integrated counter-flow heat exchanger element. The extracted air shall also be filtered before it reaches the heat exchanger block.

The ventilation unit shall vary its speed and therefore the ventilation rate, as it receives signals from one of the following:

- Manual activation from 3 position switch
  - Optional remote RF boost switch humidity sensor
  - Optional externally interconnected sensors
- } Via optional PCB

When signals are received, the fan shall alter its speed to selectable, pre-set normal and boost rates.

The unit shall have the facility to commission the supply and extract fans via inbuilt minimum and maximum speed adjustment; the fans shall have infinitely variable speed control. Once the duty of the fans is set on the fascia mounted controller the unit shall automatically adjust its speed to maintain the air volume flow rate selected on a constant volume principle.

A summer bypass shall be included (excludes 90S) that shall allow fresh air to bypass the heat exchanger, when the incoming air temperature is at or above the designated "set point"

### mrXbox90 - unit specification

The unit shall be fully insulated providing excellent thermal and acoustic characteristics and shall be complete with a multi plate counter flow high efficiency heat exchanger block, with a thermal efficiency of up to 95%. The heat exchanger shall be protected by G3 grade filters on fresh air inlet and system extract. The heat exchanger and filters shall be accessible via fascia access panels, enabling quick and easy maintenance.

The unit shall have low energy, high efficiency d.c. fan/motor assemblies with sealed for life bearings, the impellers shall be forward curved centrifugal type. The motors shall be suitable of an ambient temperature of 40°C.

The unit shall have integral temperature sensors that shall monitor the incoming and extracted air temperatures to provide frost protection as well as controlling the summer bypass.

A fascia mounted control unit with microprocessor controls with LCD display enabling infinitely variable adjustment of the air volume.

The unit shall be supplied complete with an insulated condensate drip tray and 20mm drain connection.

The breakout noise level and power requirements shall be as detailed by the unit manufacturer and in accordance with the ventilation equipment schedule.

### mrXbox90 - control options

All versions shall have a pre-wired and factory fitted, fascia mounted multi function control panel with LCD display providing the following:

- Integral speed control on supply and extract – 3 speeds available: -
  1. Low speed background ventilation control/set point.
  2. Medium speed ventilation control/set point, for day to day boost.
  3. High speed ventilation control/set point for summer boost.
- Constant volume facility to adjust for system pressure
- Filter dirty & maintenance indication on fascia control

The standard warranty for mrXbox90 series shall be for 5 years, the first year parts and labour the remainder parts only.